



**The Barat Perhentian**  
BEACH RESORT

# Discover Perhentian's beauty with a beachfront getaway

**THE COMPLETE GUIDE**

Beachfront stays on  
Perhentian Besar Island @  
The Barat



[← MAIN MENU](#)

[PACKAGE ↗](#)



Blessed with white sands  
and turquoise waters,  
The Barat Perhentian offers  
a welcoming island  
escape for families, couples,  
and adventurers.



[BOOK NOW](#)





Set along the southwest coast of **Pulau Perhentian Besar**, Barat Perhentian Beach Resort offers a relaxing island escape accessible by boat. Founded in 2015 and refurbished in 2024, the resort features modern beachfront-style chalets designed for comfort and a welcoming island atmosphere.

**With 95 rooms and chalets — 43 newly built units and 52 refurbished rooms — the resort caters to couples, families, and groups.**

Guests can enjoy waterfront dining, a 40-person meeting room, and a Dive Center offering snorkeling trips and PADI-certified diving. Nearby beaches and scenic hiking trails provide more ways to explore the island.

**Ideal for holidays, retreats, weddings, and team-building events, the resort offers activities such as scuba diving, discover dives, snorkeling, and guided hikes.**

A water taxi service at our jetty provides easy access to other beaches and villages.

At Barat Perhentian, we're committed to warm hospitality and memorable island experiences for every guest.



Room

Retreat Package

Diving Package

Meeting Package

Honeymoon Package

Itinerary

Sea / Land Transfer

Activities

PADI

Restaurant

Super Peak

T & C

Map

Contact Us

Find everything you need for  
your perfect island stay.



# Rooms designed for families, couples and solo travellers.

## ACCOMMODATION

[Room Rate](#)

[Room Options](#)

“Our room was spacious, clean, and peaceful — the perfect place to unwind after a day by the sea.”



**Seafront  
Family Chalet**

**Seafront  
Family Room**

**Seaview Room**

**Deluxe Family Room**

**Standard  
Family Chalet**










**Standard Chalet**

**Standard Room**

**Private Dorm**

**Garden Dorm**

# Room Rate

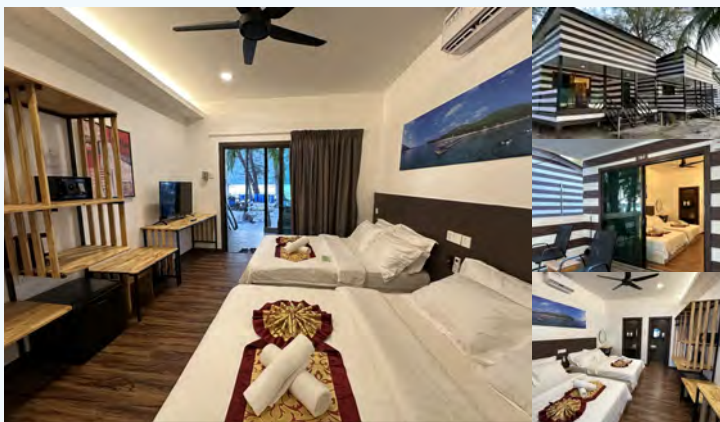
Seasonal Price	High Season	High Season Peak Surcharge	Low Season	Low Season Peak Surcharge
	MAR – SEPT 2026	MAR – SEPT 2026	FEB, OCT – NOV 2026	FEB, OCT – NOV 2026
	Price based on occupancy (MYR with 8% SST)	Price based on occupancy (MYR with 8% SST)	Price based on occupancy (MYR with 8% SST)	Price based on occupancy (MYR with 8% SST)
Room Type				
Seafront Family Chalet > 	730	830	650	750
Seafront Family Room > 	730	830	650	750
Seaview Room > 	550	600	450	500
Deluxe Family Room > 	480	530	400	450
Standard Family Chalet > 	430	480	350	400
Standard Chalet > 	380	430	280	330
Standard Room > 	380	430	280	330
Private Dorm Room > 	260	310	200	250
Garden Dorm Room > (detached toilet) 	240	290	190	240

- Price excludes meals, airport transfers, sea transfers, tourism tax (for non-Malaysian citizens), and the Marine Park Conservation Fee imposed by authorities
- Additional mattress or sofa bed (with bedsheet, comforter, and pillows): RM50 per night
- Optional Meal Vouchers: Breakfast: RM30/set, Lunch: RM40/set, Dinner: RM50/set, BBQ Dinner: RM70/set



MOST POPULAR ROOM

# Seafront Family Chalet



Seasonal Price

Peak Season

Low Season

MAR – SEPT 2026

FEB, OCT – NOV 2026

Price based on occupancy (MYR with 8% SST)

Price based on occupancy (MYR with 8% SST)

Room Type

Single Double Triple Quad Single Double Triple Quad

Room only > - - - 730 - - - 650

**3D2N Retreat Package >** 1,600 1,900 2,200 2,500 1,470 1,770 2,070 2,370  
Full Board + 2 Snorkeling Trips

**4D3N Retreat Package >** 2,370 2,770 3,170 3,570 2,160 2,560 2,960 3,360  
Full Board + 2 Snorkeling Trips

**3D2N Diving Package >** 1,830 2,350 2,870 3,390 1,690 2,210 2,730 3,250  
Full Board + 3 Dives

**4D3N Diving Package >** 2,920 3,870 4,820 5,770 2,700 3,650 4,600 5,500  
Full Board + 6 Dives

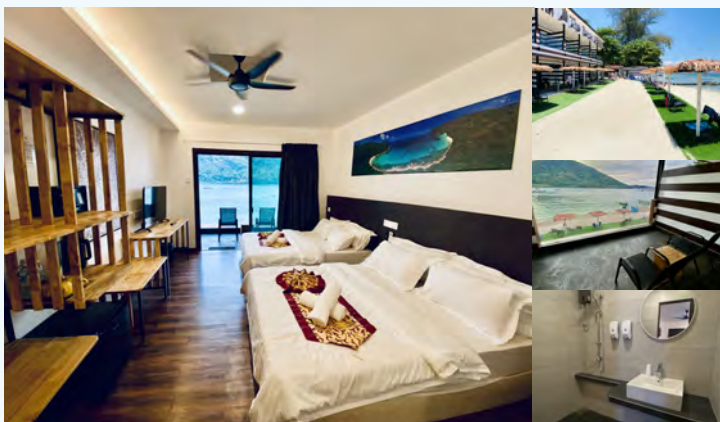
**4D3N Open Water Package >** 3,580 5,190 6,800 8,410 3,360 4,970 6,580 8,190  
Full Board + PADI O.Water Course

- 3D2N Packages – Full Board: Room + 2 Breakfasts + 1 Lunch + 1 Dinner + 1 BBQ dinner
- 4D3N Packages – Full Board: Room + 3 Breakfasts + 2 Lunches + 2 Dinners + 1 BBQ dinner
- Retreat Packages include 2 Snorkeling Trips:  
Trip A: Shark Point, Teluk KK, Turtle Point  
Trip B: Rawa Island, Tokong Burung, Serenggeh Island
- Schedules may change due to sea or weather conditions
- The resort reserves the right to replace activities with alternatives of equal value
- Price excludes airport transfers, sea transfers, tourism tax (for non-Malaysian citizens), and the Marine Park Conservation Fee imposed by authorities



BEST ROOM FOR FAMILIES

# Seafront Family Room



Seasonal Price

Peak Season

Low Season

MAR – SEPT 2026

FEB, OCT – NOV 2026

Price based on occupancy (MYR with 8% SST)

Price based on occupancy (MYR with 8% SST)

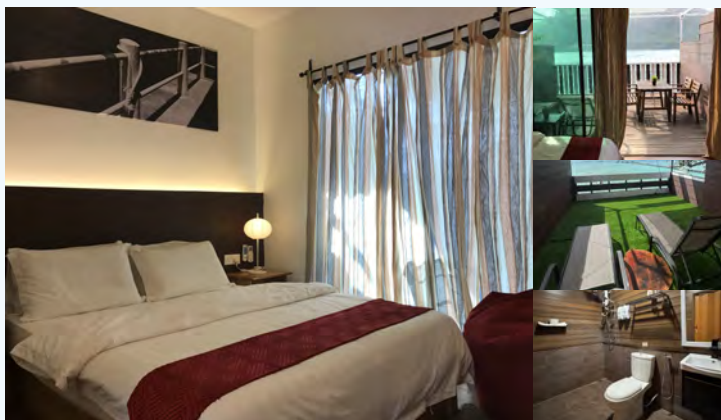
Room Type	Single	Double	Triple	Quad	Single	Double	Triple	Quad
Room only >	-	-	-	730	-	-	-	650
<b>3D2N Retreat Package &gt;</b> Full Board + 2 Snorkeling Trips	1,600	1,900	2,200	2,500	1,470	1,770	2,070	2,370
<b>4D3N Retreat Package &gt;</b> Full Board + 2 Snorkeling Trips	2,370	2,770	3,170	3,570	2,160	2,560	2,960	3,360
<b>3D2N Diving Package &gt;</b> Full Board + 3 Dives	1,830	2,350	2,870	3,390	1,690	2,210	2,730	3,250
<b>4D3N Diving Package &gt;</b> Full Board + 6 Dives	2,920	3,870	4,820	5,770	2,700	3,650	4,600	5,500
<b>4D3N Open Water Package &gt;</b> Full Board + PADI O.Water Course	3,580	5,190	6,800	8,410	3,360	4,970	6,580	8,190

- 3D2N Packages – Full Board: Room + 2 Breakfasts + 1 Lunch + 1 Dinner + 1 BBQ dinner
- 4D3N Packages – Full Board: Room + 3 Breakfasts + 2 Lunches + 2 Dinners + 1 BBQ dinner
- Retreat Packages include 2 Snorkeling Trips:  
 Trip A: Shark Point, Teluk KK, Turtle Point  
 Trip B: Rawa Island, Tokong Burung, Serenggeh Island
- Schedules may change due to sea or weather conditions
- The resort reserves the right to replace activities with alternatives of equal value
- Price excludes airport transfers, sea transfers, tourism tax (for non-Malaysian citizens), and the Marine Park Conservation Fee imposed by authorities



**COUPLES' FAVOURITE ROOM**

# Seaview Room


**Seasonal Price**
**Peak Season**
**Low Season**

MAR – SEPT 2026

FEB, OCT – NOV 2026

Price based on occupancy (MYR with 8% SST)

Price based on occupancy (MYR with 8% SST)

**Room Type**

Single Double Triple Quad

Single Double Triple Quad

**Room only >**

- 550 - 450 - -

**3D2N Retreat Package >**

1,280 1,580 - - 1,100 1,400 - -

Full Board + 2 Snorkeling Trips

**4D3N Retreat Package >**

1,890 2,290 - - 1,620 2,020 - -

Full Board + 2 Snorkeling Trips

**3D2N Diving Package >**

1,510 2,030 - - 1,330 1,850 - -

Full Board + 3 Dives

**4D3N Diving Package >**

2,440 3,390 - - 2,350 3,300 - -

Full Board + 6 Dives

**4D3N Open Water Package >**

3,090 4,700 - - 2,820 4,430 - -

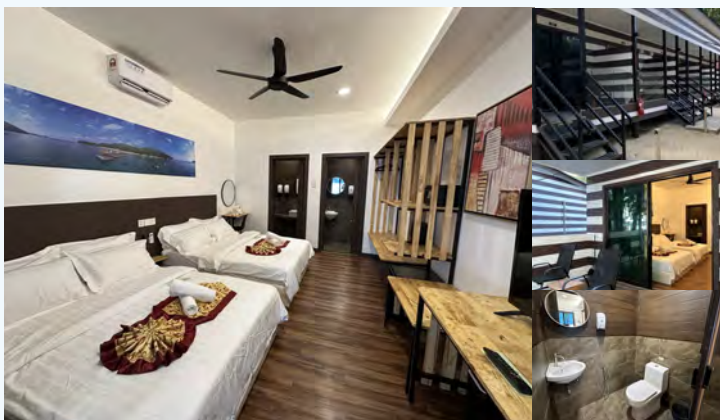
Full Board + PADI O.Water Course

- 3D2N Packages – Full Board: Room + 2 Breakfasts + 1 Lunch + 1 Dinner + 1 BBQ dinner
- 4D3N Packages – Full Board: Room + 3 Breakfasts + 2 Lunches + 2 Dinners + 1 BBQ dinner
- Retreat Packages include 2 Snorkeling Trips:  
 Trip A: Shark Point, Teluk KK, Turtle Point  
 Trip B: Rawa Island, Tokong Burung, Serenggeh Island
- Schedules may change due to sea or weather conditions
- The resort reserves the right to replace activities with alternatives of equal value
- Price excludes airport transfers, sea transfers, tourism tax (for non-Malaysian citizens), and the Marine Park Conservation Fee imposed by authorities



GREAT ROOM FOR GROUPS

# Deluxe Family Room



Seasonal Price

Peak Season

Low Season

MAR – SEPT 2026

FEB, OCT – NOV 2026

Price based on occupancy (MYR with 8% SST)

Price based on occupancy (MYR with 8% SST)

Room Type

Single Double Triple Quad Single Double Triple Quad

Room only > - - - 480 - - - 400

**3D2N Retreat Package >** 1,160 1,460 1,760 2,060 1,000 1,300 1,600 1,900  
Full Board + 2 Snorkeling Trips

**4D3N Retreat Package >** 1,700 2,100 2,500 2,900 1,480 1,880 2,280 2,680  
Full Board + 2 Snorkeling Trips

**3D2N Diving Package >** 1,380 1,900 2,420 2,940 1,240 1,760 2,280 2,800  
Full Board + 3 Dives

**4D3N Diving Package >** 2,250 3,200 4,150 5,100 2,030 2,980 3,930 4,880  
Full Board + 6 Dives

**4D3N Open Water Package >** 2,900 4,510 6,120 7,730 2,690 4,300 5,910 7,520  
Full Board + PADI O.Water Course

- 3D2N Packages – Full Board: Room + 2 Breakfasts + 1 Lunch + 1 Dinner + 1 BBQ dinner
- 4D3N Packages – Full Board: Room + 3 Breakfasts + 2 Lunches + 2 Dinners + 1 BBQ dinner
- Retreat Packages include 2 Snorkeling Trips:  
Trip A: Shark Point, Teluk KK, Turtle Point  
Trip B: Rawa Island, Tokong Burung, Serenggeh Island
- Schedules may change due to sea or weather conditions
- The resort reserves the right to replace activities with alternatives of equal value
- Price excludes airport transfers, sea transfers, tourism tax (for non-Malaysian citizens), and the Marine Park Conservation Fee imposed by authorities



FAMILY-FRIENDLY ROOM OPTION

# Standard Family Chalet



Seasonal Price

Peak Season

Low Season

MAR – SEPT 2026

FEB, OCT – NOV 2026

Price based on occupancy (MYR with 8% SST)

Price based on occupancy (MYR with 8% SST)

Room Type	Single	Double	Triple	Quad	Single	Double	Triple	Quad
Room only >	-	-	-	430	-	-	-	350

<b>3D2N Retreat Package &gt;</b> Full Board + 2 Snorkeling Trips	1,070	1,370	1,670	1,970	930	1,230	1,530	1,830
---	-------	-------	-------	-------	-----	-------	-------	-------

<b>4D3N Retreat Package &gt;</b> Full Board + 2 Snorkeling Trips	1,560	1,960	2,360	2,760	1,350	1,750	2,150	2,550
---	-------	-------	-------	-------	-------	-------	-------	-------

<b>3D2N Diving Package &gt;</b> Full Board + 3 Dives	1,300	1,820	2,340	2,860	1,150	1,670	2,190	2,710
---	-------	-------	-------	-------	-------	-------	-------	-------

<b>4D3N Diving Package &gt;</b> Full Board + 6 Dives	2,110	3,060	4,010	4,960	1,870	2,820	3,770	4,720
---	-------	-------	-------	-------	-------	-------	-------	-------

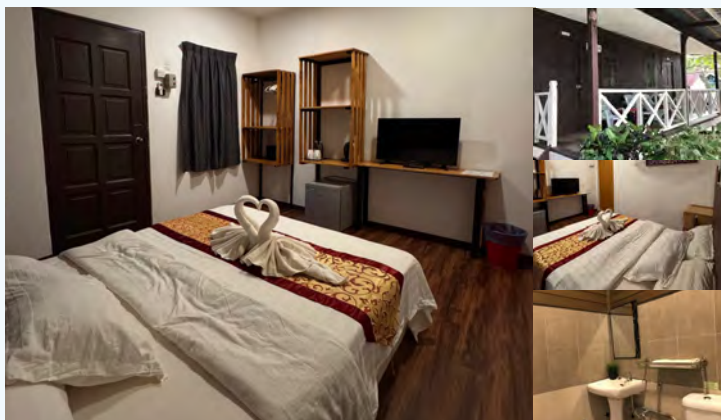
<b>4D3N Open Water Package &gt;</b> Full Board + PADI O.Water Course	2,770	4,380	5,990	7,600	2,550	4,160	5,770	7,380
---	-------	-------	-------	-------	-------	-------	-------	-------

- 3D2N Packages – Full Board: Room + 2 Breakfasts + 1 Lunch + 1 Dinner + 1 BBQ dinner
- 4D3N Packages – Full Board: Room + 3 Breakfasts + 2 Lunches + 2 Dinners + 1 BBQ dinner
- Retreat Packages include 2 Snorkeling Trips:  
 Trip A: Shark Point, Teluk KK, Turtle Point  
 Trip B: Rawa Island, Tokong Burung, Serenggeh Island
- Schedules may change due to sea or weather conditions
- The resort reserves the right to replace activities with alternatives of equal value
- Price excludes airport transfers, sea transfers, tourism tax (for non-Malaysian citizens), and the Marine Park Conservation Fee imposed by authorities



**BEST VALUE ROOM STAY**

# Standard Chalet


**Seasonal Price**
**Peak Season**

MAR – SEPT 2026

Price based on occupancy (MYR with 8% SST)

**Low Season**

FEB, OCT – NOV 2026

Price based on occupancy (MYR with 8% SST)

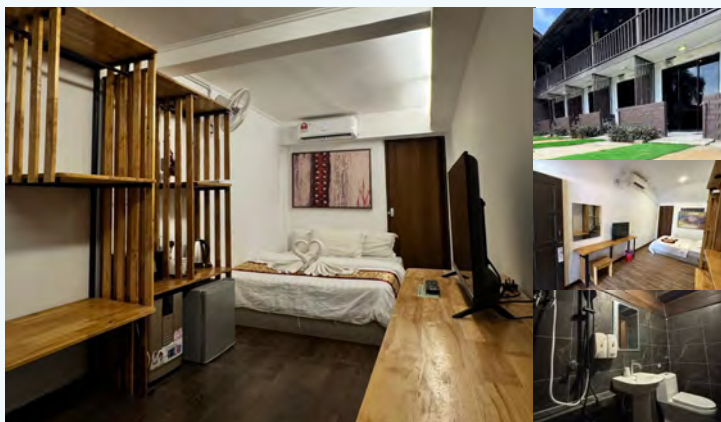
Room Type	Single	Double	Triple	Quad	Single	Double	Triple	Quad
<b>Room only &gt;</b>	-	380	-	-	-	280	-	-
<b>3D2N Retreat Package &gt;</b> Full Board + 2 Snorkeling Trips	980	1,280	-	-	800	1,100	-	-
<b>4D3N Retreat Package &gt;</b> Full Board + 2 Snorkeling Trips	1,430	1,830	-	-	1,160	1,560	-	-
<b>3D2N Diving Package &gt;</b> Full Board + 3 Dives	1,200	1,720	-	-	1,020	1,540	-	-
<b>4D3N Diving Package &gt;</b> Full Board + 6 Dives	1,980	2,930	-	-	1,700	2,650	-	-
<b>4D3N Open Water Package &gt;</b> Full Board + PADI O.Water Course	2,630	4,240	-	-	2,360	3,970	-	-

- 3D2N Packages – Full Board: Room + 2 Breakfasts + 1 Lunch + 1 Dinner + 1 BBQ dinner
- 4D3N Packages – Full Board: Room + 3 Breakfasts + 2 Lunches + 2 Dinners + 1 BBQ dinner
- Retreat Packages include 2 Snorkeling Trips:  
 Trip A: Shark Point, Teluk KK, Turtle Point  
 Trip B: Rawa Island, Tokong Burung, Serenggeh Island
- Schedules may change due to sea or weather conditions
- The resort reserves the right to replace activities with alternatives of equal value
- Price excludes airport transfers, sea transfers, tourism tax (for non-Malaysian citizens), and the Marine Park Conservation Fee imposed by authorities



**BEST VALUE ROOM STAY**

# Standard Room


**Seasonal Price**
**Peak Season**
**Low Season**

MAR – SEPT 2026

FEB, OCT – NOV 2026

Price based on occupancy (MYR with 8% SST)

Price based on occupancy (MYR with 8% SST)

**Room Type**

Single Double Triple Quad

Single Double Triple Quad

**Room only >**

- 380 - - - 280 - - -

**3D2N Retreat Package >**

980 1,280 - - 800 1,100 - -

Full Board + 2 Snorkeling Trips

**4D3N Retreat Package >**

1,430 1,830 - - 1,160 1,560 - -

Full Board + 2 Snorkeling Trips

**3D2N Diving Package >**

1,200 1,720 - - 1,020 1,540 - -

Full Board + 3 Dives

**4D3N Diving Package >**

1,980 2,930 - - 1,700 2,650 - -

Full Board + 6 Dives

**4D3N Open Water Package >**

2,630 4,240 - - 2,360 3,970 - -

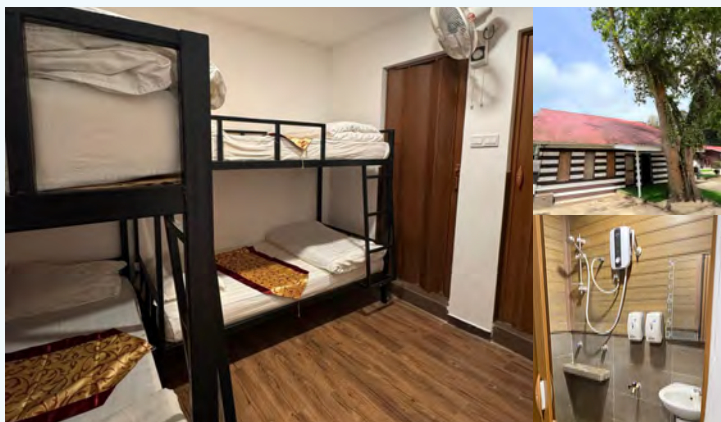
Full Board + PADI O.Water Course

- 3D2N Packages – Full Board: Room + 2 Breakfasts + 1 Lunch + 1 Dinner + 1 BBQ dinner
- 4D3N Packages – Full Board: Room + 3 Breakfasts + 2 Lunches + 2 Dinners + 1 BBQ dinner
- Retreat Packages include 2 Snorkeling Trips:  
 Trip A: Shark Point, Teluk KK, Turtle Point  
 Trip B: Rawa Island, Tokong Burung, Serenggeh Island
- Schedules may change due to sea or weather conditions
- The resort reserves the right to replace activities with alternatives of equal value
- Price excludes airport transfers, sea transfers, tourism tax (for non-Malaysian citizens), and the Marine Park Conservation Fee imposed by authorities



**SOLO TRAVELLER'S ROOM CHOICE**

# Private Dorm Room


**Seasonal Price**
**Peak Season**
**Low Season**

MAR – SEPT 2026

FEB, OCT – NOV 2026

Price based on occupancy (MYR with 8% SST)

Price based on occupancy (MYR with 8% SST)

**Room Type**

Single Double Triple Quad

Single Double Triple Quad

**Room only >**

- - - 260

- - - 200

**3D2N Retreat Package >**

Full Board + 2 Snorkeling Trips

760 1,060 1,360 1,660

660 960 1,260 1,560

**4D3N Retreat Package >**

Full Board + 2 Snorkeling Trips

1,100 1,500 1,900 2,300

940 1,340 1,740 2,140

**3D2N Diving Package >**

Full Board + 3 Dives

990 1,510 2,030 2,550

880 1,400 1,920 2,440

**4D3N Diving Package >**

Full Board + 6 Dives

1,650 2,600 3,550 4,500

1,500 2,450 3,400 4,350

**4D3N Open Water Package >**

Full Board + PADI O.Water Course

2,310 3,920 5,530 7,140

2,150 3,760 5,370 6,980

- 3D2N Packages – Full Board: Room + 2 Breakfasts + 1 Lunch + 1 Dinner + 1 BBQ dinner
- 4D3N Packages – Full Board: Room + 3 Breakfasts + 2 Lunches + 2 Dinners + 1 BBQ dinner
- Retreat Packages include 2 Snorkeling Trips:  
 Trip A: Shark Point, Teluk KK, Turtle Point  
 Trip B: Rawa Island, Tokong Burung, Serenggeh Island
- Schedules may change due to sea or weather conditions
- The resort reserves the right to replace activities with alternatives of equal value
- Price excludes airport transfers, sea transfers, tourism tax (for non-Malaysian citizens), and the Marine Park Conservation Fee imposed by authorities



MOST AFFORDABLE ROOM OPTION

# Garden Dorm Room



Seasonal Price

Peak Season

Low Season

MAR – SEPT 2026

FEB, OCT – NOV 2026

Price based on occupancy (MYR with 8% SST)

Price based on occupancy (MYR with 8% SST)

Room Type

Single Double Triple Quad Single Double Triple Quad

Room only > - - - 240 - - - 190

**3D2N Retreat Package >** 730 1,030 1,330 1,630 640 940 1,240 1,540  
Full Board + 2 Snorkeling Trips

**4D3N Retreat Package >** 1,050 1,450 1,850 2,250 920 1,320 1,720 2,120  
Full Board + 2 Snorkeling Trips

**3D2N Diving Package >** 960 1,480 2,000 2,520 860 1,380 1,900 2,420  
Full Board + 3 Dives

**4D3N Diving Package >** 1,600 2,550 3,500 4,450 1,460 2,410 3,360 4,310  
Full Board + 6 Dives

**4D3N Open Water Package >** 2,260 3,870 5,480 7,090 2,120 3,730 5,340 6,950  
Full Board + PADI O.Water Course

- 3D2N Packages – Full Board: Room + 2 Breakfasts + 1 Lunch + 1 Dinner + 1 BBQ dinner
- 4D3N Packages – Full Board: Room + 3 Breakfasts + 2 Lunches + 2 Dinners + 1 BBQ dinner
- Retreat Packages include 2 Snorkeling Trips:  
Trip A: Shark Point, Teluk KK, Turtle Point  
Trip B: Rawa Island, Tokong Burung, Serenggeh Island
- Schedules may change due to sea or weather conditions
- The resort reserves the right to replace activities with alternatives of equal value
- Price excludes airport transfers, sea transfers, tourism tax (for non-Malaysian citizens), and the Marine Park Conservation Fee imposed by authorities





# All-inclusive package for ocean lovers, snorkelers & divers.

## FULL BOARD PACKAGE

Retreat Package

Diving Package

OWC

Meeting Package

Honeymoon Package

“Everything was planned for us — all we had to do was relax and enjoy the island.”


















**MOST POPULAR CHOICE**

# 3D2N Retreat Package

## Full Board & 2 Snorkeling Trips

Room + 2 Breakfasts + 1 Lunch + 1 Dinner + 1 BBQ Dinner  
+ Snorkeling Trip A and Snorkeling Trip B

Seasonal Price	Peak Season MAR - SEPT 2026 <small>Price based on occupancy (MYR with 8% SST)</small>				Low Season FEB, OCT - NOV 2026 <small>Price based on occupancy (MYR with 8% SST)</small>			
	Single	Double	Triple	Quad	Single	Double	Triple	Quad
<b>Seafont Family Chalet &gt;</b>  • 	1,600	1,900	2,200	2,500	1,470	1,770	2,070	2,370
<b>Seafont Family Room &gt;</b>  • 	1,600	1,900	2,200	2,500	1,470	1,770	2,070	2,370
<b>Seaview Room &gt;</b> 	1,280	1,580	-	-	1,100	1,400	-	-
<b>Deluxe Family Room &gt;</b>  • 	1,160	1,460	1,760	2,060	1,000	1,300	1,600	1,900
<b>Standard Family Chalet &gt;</b>  • 	1,070	1,370	1,670	1,970	930	1,230	1,530	1,830
<b>Standard Chalet &gt;</b> 	980	1,280	-	-	800	1,100	-	-
<b>Standard Room &gt;</b> 	980	1,280	-	-	800	1,100	-	-
<b>Private Dorm Room &gt;</b>  • 	760	1,060	1,360	1,660	660	960	1,260	1,560
<b>Garden Dorm Room &gt;</b> <small>(detached toilet)</small>  • 	730	1,030	1,330	1,630	640	940	1,240	1,540

- Extra pax (3rd pax in double rooms or 5th pax in quad rooms) with the package and an extra mattress: RM430/pax
- Retreat Packages include 2 Snorkeling Trips:  
Trip A: Shark Point, Teluk KK, Turtle Point  
Trip B: Rawa Island, Tokong Burung, Serenggeh Island
- Schedules may change due to sea or weather conditions
- The resort reserves the right to replace activities with alternatives of equal value
- Price excludes airport transfers, sea transfers, tourism tax (for non-Malaysian citizens), and the Marine Park Conservation Fee imposed by authorities
- Optional children snorkeling Trip A+B available at RM120/child





















**RECOMMENDED PACKAGE**

# 4D3N Retreat Package

## Full Board & 2 Snorkeling Trips

Room + 3 Breakfasts + 2 Lunches + 2 Dinners + 1 BBQ Dinner  
+ Snorkeling Trip A and Snorkeling Trip B

Seasonal Price	Peak Season MAR - SEPT 2026 <small>Price based on occupancy (MYR with 8% SST)</small>				Low Season FEB, OCT - NOV 2026 <small>Price based on occupancy (MYR with 8% SST)</small>			
	Single	Double	Triple	Quad	Single	Double	Triple	Quad
<b>Seafont Family Chalet &gt;</b>  • 	2,370	2,770	3,170	3,570	2,160	2,560	2,960	3,360
<b>Seafont Family Room &gt;</b>  • 	2,370	2,770	3,170	3,570	2,160	2,560	2,960	3,360
<b>Seaview Room &gt;</b>  • 	1,890	2,290	-	-	1,620	2,020	-	-
<b>Deluxe Family Room &gt;</b>  • 	1,700	2,100	2,500	2,900	1,480	1,880	2,280	2,680
<b>Standard Family Chalet &gt;</b>  • 	1,560	1,960	2,360	2,760	1,350	1,750	2,150	2,550
<b>Standard Chalet &gt;</b>  • 	1,430	1,830	-	-	1,160	1,560	-	-
<b>Standard Room &gt;</b>  • 	1,430	1,830	-	-	1,160	1,560	-	-
<b>Private Dorm Room &gt;</b>  • 	1,100	1,500	1,900	2,300	940	1,340	1,740	2,140
<b>Garden Dorm Room &gt;</b> <small>(detached toilet)</small>  • 	1,050	1,450	1,850	2,250	920	1,320	1,720	2,120

- Extra pax (3rd pax in double rooms or 5th pax in quad rooms) with the package and an extra mattress: RM600/pax
- Retreat Packages include 2 Snorkeling Trips:  
Trip A: Shark Point, Teluk KK, Turtle Point  
Trip B: Rawa Island, Tokong Burung, Serenggeh Island
- Schedules may change due to sea or weather conditions
- The resort reserves the right to replace activities with alternatives of equal value
- Price excludes airport transfers, sea transfers, tourism tax (for non-Malaysian citizens), and the Marine Park Conservation Fee imposed by authorities
- Optional children snorkeling Trip A+B available at RM120/child

























**DIVERS' CHOICE PACKAGE**

# 3D2N Diving Package

Full Board & 3 Dives (own equipment for certified diver only)

Room + 2 Breakfasts + 1 Lunch + 1 Dinner + 1 BBQ Dinner + 3 Dives

Seasonal Price	Peak Season MAR - SEPT 2026 <small>Price based on occupancy (MYR with 8% SST)</small>				Low Season FEB, OCT - NOV 2026 <small>Price based on occupancy (MYR with 8% SST)</small>			
	Single	Double	Triple	Quad	Single	Double	Triple	Quad
<b>Seafront Family Chalet &gt;</b>  •  • 	1,830	2,350	2,870	3,390	1,690	2,210	2,730	3,250
<b>Seafront Family Room &gt;</b>  •  • 	1,830	2,350	2,870	3,390	1,690	2,210	2,730	3,250
<b>Seaview Room &gt;</b>  • 	1,510	2,030	-	-	1,330	1,850	-	-
<b>Deluxe Family Room &gt;</b>  •  • 	1,380	1,900	2,420	2,940	1,240	1,760	2,280	2,800
<b>Standard Family Chalet &gt;</b>  •  • 	1,300	1,820	2,340	2,860	1,150	1,670	2,190	2,710
<b>Standard Chalet &gt;</b>  • 	1,200	1,720	-	-	1,020	1,540	-	-
<b>Standard Room &gt;</b>  • 	1,200	1,720	-	-	1,020	1,540	-	-
<b>Private Dorm Room &gt;</b>  • 	990	1,510	2,030	2,550	880	1,400	1,920	2,440
<b>Garden Dorm Room &gt;</b> <small>(detached toilet)</small>  • 	960	1,480	2,000	2,520	860	1,380	1,900	2,420

- Extra pax (3rd pax in double rooms or 5th pax in quad rooms) with the package and an extra mattress: RM680/pax
- Dive schedules may change due to sea or weather conditions
- The resort reserves the right to replace activities with alternatives of equal value
- Price excludes airport transfers, sea transfers, tourism tax (for non-Malaysian citizens), and the Marine Park Conservation Fee imposed by authorities


















RECOMMENDED DIVER'S PACKAGE

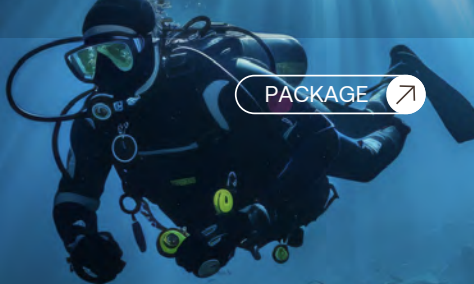
# 4D3N Diving Package

Full Board & 6 Dives (own equipment for certified diver only)

Room + 3 Breakfasts + 2 Lunches + 2 Dinners + 1 BBQ Dinner + 6 Dives

Seasonal Price	Peak Season MAR - SEPT 2026 <small>Price based on occupancy (MYR with 8% SST)</small>				Low Season FEB, OCT - NOV 2026 <small>Price based on occupancy (MYR with 8% SST)</small>			
	Single	Double	Triple	Quad	Single	Double	Triple	Quad
<b>Seafront Family Chalet &gt;</b>  • 	2,920	3,870	4,820	5,770	2,700	3,650	4,600	5,550
<b>Seafront Family Room &gt;</b>  • 	2,920	3,870	4,820	5,770	2,700	3,650	4,600	5,550
<b>Seaview Room &gt;</b> 	2,440	3,390	-	-	2,350	3,300	-	-
<b>Deluxe Family Room &gt;</b>  • 	2,250	3,200	4,150	5,100	2,030	2,980	3,930	4,880
<b>Standard Family Chalet &gt;</b>  • 	2,110	3,060	4,010	4,960	1,870	2,820	3,770	4,720
<b>Standard Chalet &gt;</b> 	1,980	2,930	-	-	1,700	2,650	-	-
<b>Standard Room &gt;</b> 	1,980	2,930	-	-	1,700	2,650	-	-
<b>Private Dorm Room &gt;</b>  • 	1,650	2,600	3,550	4,500	1,500	2,450	3,400	4,350
<b>Garden Dorm Room &gt;</b> <small>(detached toilet)</small>  • 	1,600	2,550	3,500	4,450	1,460	2,410	3,360	4,310












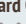

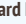




- Extra pax (3rd pax in double rooms or 5th pax in quad rooms) with the package and an extra mattress: RM1,210/pax
- Dive schedules may change due to sea or weather conditions
- The resort reserves the right to replace activities with alternatives of equal value
- Price excludes airport transfers, sea transfers, tourism tax (for non-Malaysian citizens), and the Marine Park Conservation Fee imposed by authorities


**CERTIFICATION PACKAGE**

# 4D3N Open Water Package

## Full Board & PADI Open Water Course / AOW

Room + 3 Breakfasts + 2 Lunches + 2 Dinners + 1 BBQ Dinner  
+ PADI OWC / AOW

Seasonal Price	Peak Season MAR - SEPT 2026 <small>Price based on occupancy (MYR with 8% SST)</small>				Low Season FEB, OCT - NOV 2026 <small>Price based on occupancy (MYR with 8% SST)</small>			
	Single	Double	Triple	Quad	Single	Double	Triple	Quad
<b>Seafront Family Chalet &gt;</b>  • 	3,580	5,190	6,800	8,410	3,360	4,970	6,580	8,190
<b>Seafront Family Room &gt;</b>  • 	3,580	5,190	6,800	8,410	3,360	4,970	6,580	8,190
<b>Seaview Room &gt;</b>  • 	3,090	4,700	-	-	2,820	4,430	-	-
<b>Deluxe Family Room &gt;</b>  • 	2,900	4,510	6,120	7,730	2,690	4,300	5,910	7,520
<b>Standard Family Chalet &gt;</b>  • 	2,770	4,380	5,990	7,600	2,550	4,160	5,770	7,380
<b>Standard Chalet &gt;</b>  • 	2,630	4,240	-	-	2,360	3,970	-	-
<b>Standard Room &gt;</b>  • 	2,630	4,240	-	-	2,360	3,970	-	-
<b>Private Dorm Room &gt;</b>  • 	2,310	3,920	5,530	7,140	2,150	3,760	5,370	6,980
<b>Garden Dorm Room &gt;</b> <small>(detached toilet)</small>  • 	2,260	3,870	5,480	7,090	2,120	3,730	5,340	6,950

- Extra pax (3rd pax in double rooms or 5th pax in quad rooms) with the package and an extra mattress: RM1,940/pax
- Dive schedules may change due to sea or weather conditions
- The resort reserves the right to replace activities with alternatives of equal value
- Price excludes airport transfers, sea transfers, tourism tax (for non-Malaysian citizens), and the Marine Park Conservation Fee imposed by authorities





## MEETING ROOM PACKAGE

# Meeting Room Package

A fully air-conditioned meeting space designed for productive sessions, equipped with:

Classroom seating (up to 40 pax)

Projector & screen | Whiteboard | PA system

Perfect for meetings, workshops, and team-building programmes.

Session	Time	Rate (MYR)	Unit / Remarks
Morning Session	8am - 12pm	60	Per pax
Afternoon Session	2pm - 5pm	60	Per pax
Evening Session	7pm - 11pm	60	Per pax

Guests on a Retreat Package may choose to:

- Convert 1 Snorkeling Trip into 1 Meeting Room Session, or
- Convert 2 Snorkeling Trips into 2 Meeting Room Sessions



[MAIN MENU](#)[PACKAGE](#)

### HONEYMOON PACKAGE

# Honeymoon Package

Enhance your Retreat Package with a romantic **Honeymoon Room Setting and a Candlelight Dinner** to celebrate your special moments.

**3D2N: Room + 2 Breakfasts + 1 Lunch + 1 Dinner + Candlelight Dinner + 2 Snorkeling Trips**

Session	Unit / Remarks	Rate (MYR)
Seafront Family Room	2 pax	1,900
Honeymoon Room Setting	-	100
Candlelight Dinner Setting	-	200
Two-way sea transfer	MYR 70 x 2 pax	140
<b>Total Honeymoon Package</b>		<b>2,340</b>

[BOOK NOW](#)



# From sunrise to sunset, daily schedules for retreat and diving guests.

## PACKAGE ITINERARY

[Retreat Itinerary](#)

[Diving Itinerary](#)

[OWC](#)

“From meals to activities, the package made our trip effortless and memorable.”



# 3D2N Retreat Itinerary

## Full Board & 2 Snorkeling Trips

Room + 2 Breakfasts + Lunch + Dinner + BBQ Dinner + 2 Snorkeling Trips (10am or 2pm)

<b>Day 1</b>	10:00	Arrival at Kuala Besut Jetty – The Barat Jetty Office <i>(own arrangement)</i> .
	11:00	Light lunch at the jetty <i>(own arrangement)</i> .
	12:00	Depart by speedboat to The Barat Resort <i>(own arrangement)</i> .
	13:00	Arrive at The Barat Resort and check in.
	14:00	<b>Snorkeling Trip A – Shark Point / Teluk KK / Turtle Point / Turtle Beach.</b>
	17:00	Return from snorkeling trip.
	18:30	Dinner at the resort.
	20:30	Free and easy.
<b>Day 2</b>	08:00	Breakfast at the resort.
	10:00	<b>Snorkeling Trip B – Serenggeh / Rawa Island / Tokong Burung / Lighthouse.</b>
	13:00	Return from snorkeling trip.
	13:30	Lunch at the resort.
	14:30	Free and easy.
	18:30	BBQ dinner.
20:30	Free and easy <i>(Please arrange return boat schedule with the Front Office)</i> .	
<b>Day 3</b>	08:00	Breakfast at the resort.
	10:00	Prepare for check-out.
	12:00	Depart by speedboat to Besut Jetty <i>(own arrangement)</i> .
	13:00	Arrive at Besut Jetty.

• Disclaimer: Timings and activities are subject to sea and weather conditions and may change without prior notice



# 4D3N Retreat Itinerary

## Full Board & 2 Snorkeling Trips

Room + 3 Breakfasts + 2 Lunches + 1 Dinner + BBQ Dinner + 2 Snorkeling Trips (10am or 2pm)

<b>Day 1</b>	10:00	Arrival at Kuala Besut Jetty – The Barat Jetty Office <i>(own arrangement)</i> .
	11:00	Light lunch at the jetty <i>(own arrangement)</i> .
	12:00	Depart by speedboat to The Barat Resort <i>(own arrangement)</i> .
	13:00	Arrive at The Barat Resort and check in.
	14:00	Free and easy.
	18:30	Dinner at the resort.
	20:30	Free and easy.
<b>Day 2</b>	08:00	Breakfast at the resort.
	10:00	<b>Snorkeling Trip A – Shark Point / Teluk KK / Turtle Point / Turtle Beach.</b>
	13:00	Return from snorkeling trip.
	13:30	Lunch at the resort.
	14:30	Free and easy.
	18:30	Dinner at the resort.
	20:30	Free and easy.
<b>Day 3</b>	08:00	Breakfast at the resort.
	10:00	<b>Snorkeling Trip B – Serenggeh / Rawa Island / Tokong Burung / Lighthouse.</b>
	13:00	Lunch at the resort.
	14:30	Free and easy.
	18:30	BBQ dinner.
20:30	Free and easy <i>(Please arrange return boat schedule with the Front Office)</i> .	
<b>Day 4</b>	08:00	Breakfast at the resort.
	10:00	Prepare for check-out.
	12:00	Depart by speedboat to Besut Jetty <i>(own arrangement)</i> .
	13:00	Arrive at Besut Jetty.

• Disclaimer: Timings and activities are subject to sea and weather conditions and may change without prior notice



# 3D2N Diving Itinerary

## Full Board & 3 Dives (own equipment for certified diver only)

Room + 2 Breakfasts + Lunch + Dinner + BBQ Dinner + 3 Dives (8am, 11am, 2pm or 4pm)

<b>Day 1</b>	10:00	Arrival at Kuala Besut Jetty – The Barat Jetty Office <i>(own arrangement)</i> .
	11:00	Light lunch at the jetty <i>(own arrangement)</i> .
	12:00	Depart by speedboat to the resort <i>(own arrangement)</i> .
	13:00	Arrive at The Barat Resort and check in.
	13:30	Set up dive equipment.
	14:00	<b>1<sup>st</sup> (First) dive.</b>
	15:30	Return to the resort.
	18:30	Dinner at the resort.
	20:30	Free and easy.
<b>Day 2</b>	07:00	Breakfast at the resort.
	08:00	<b>2<sup>nd</sup> (Second) dive.</b>
	09:30	Return to the resort.
	12:00	Lunch at the resort.
	14:00	<b>3<sup>rd</sup> (Third) dive.</b>
	15:30	Return to the resort.
	18:30	BBQ dinner.
20:30	Free and easy <i>(Please arrange return boat schedule with the Front Office)</i> .	
<b>Day 3</b>	08:00	Breakfast at the resort.
	10:00	Prepare for check-out.
	12:00	Depart by speedboat to Besut Jetty <i>(own arrangement)</i> .
	13:00	Arrive at Besut Jetty.

• Disclaimer: Timings and activities are subject to sea and weather conditions and may change without prior notice

# 4D3N Diving Itinerary

**Full Board & 6 Dives** (own equipment for certified diver only)

Room + 3 Breakfasts + 2 Lunches + 1 Dinner + BBQ Dinner + 3 Dives (8am, 11am, 2pm or 4pm)

<b>Day 1</b>	10:00	Arrival at Kuala Besut Jetty – The Barat Jetty Office <i>(own arrangement)</i> .
	11:00	Light lunch at the jetty <i>(own arrangement)</i> .
	12:00	Depart by speedboat to the resort <i>(own arrangement)</i> .
	13:00	Arrive at The Barat Resort and check in.
	13:30	Set up dive equipment.
	14:00	<b>1<sup>st</sup> (First) dive.</b>
	15:30	Return to the resort.
	18:30	Dinner at the resort.
	20:30	Free and easy.
<b>Day 2</b>	07:00	Breakfast at the resort.
	08:00	<b>2<sup>nd</sup> (Second) dive.</b>
	09:30	Return to the resort.
	11:00	<b>3<sup>rd</sup> (Third) dive.</b>
	12:30	Return to the resort.
	13:00	Lunch at the resort.
	14:00	<b>4<sup>th</sup> (Fourth) dive.</b>
	15:30	Return to the resort.
	18:30	Dinner at the resort.
20:30	Free and easy.	
<b>Day 3</b>	07:00	Breakfast at the resort.
	08:00	<b>5<sup>th</sup> (Fifth) dive.</b>
	09:30	Return to the resort.
	11:00	<b>6<sup>th</sup> (Sixth) dive.</b>
	12:30	Return to the resort.
	13:00	Lunch at the resort.
	14:00	Free and easy.
	18:30	BBQ dinner.
	20:30	Free and easy <i>(Please arrange return boat schedule with the Front Office)</i> .
<b>Day 4</b>	08:00	Breakfast at the resort.
	10:00	Prepare for check-out.
	12:00	Depart by speedboat to Besut Jetty <i>(own arrangement)</i> .
	13:00	Arrive at Besut Jetty.

• Disclaimer: Timings and activities are subject to sea and weather conditions and may change without prior notice

# 4D3N Open Water Itinerary

## Full Board & PADI Open Water Course / AOW

Room + 3 Breakfasts + 2 Lunches + 1 Dinner + BBQ Dinner + PADI OWC / AOW

<b>Day 1</b>	09:00	Arrive at Kuala Besut Jetty – The Barat Jetty Office <i>(own arrangement)</i> .
	09:30	Depart by speedboat to The Barat Resort <i>(own arrangement)</i> .
	10:30	Arrive and check in at The Barat Resort.
	11:00	Report to the Dive Center.
	11:30	Briefing and theory session for Open Water Course students.
	13:00	Light lunch <i>(own arrangement)</i> .
	14:00	Set up dive equipment and continue with theory session.
	15:00	<b>Confined water dives.</b>
	17:30	Return from diving.
	18:30	Dinner at the resort.
	20:00	Evening briefing and theory session.
	22:00	Rest for the night.
	<b>Day 2</b>	07:00
08:00		Morning briefing and theory session.
11:00		<b>Open water dive session.</b>
12:30		Return from diving.
13:00		Lunch at the resort.
14:00		<b>Afternoon briefing and open water dive session.</b>
15:30		Return from diving.
16:00		<b>Evening open water dive session.</b>
17:30		Return to the resort.
18:30		Dinner at the resort.
20:00		Evening briefing and theory session.
22:00		Rest for the night.
<b>Day 3</b>	07:00	Breakfast at the resort.
	08:00	Morning briefing and theory session.
	11:00	<b>Briefing and open water dive session.</b>
	12:30	Return from diving.
	13:00	Lunch at the resort.
	14:00	<b>Afternoon briefing and open water dive session.</b>
	15:30	Return from diving.
	18:30	BBQ dinner.
	20:00	Evening briefing, theory, and exam session. <i>(Return boat schedule: Front Office.)</i>
	22:00	Free and easy evening.
<b>Day 4</b>	08:00	Breakfast at the resort.
	09:00	Final briefing and certification presentation.
	10:00	Prepare for check-out.
	12:00	Lunch <i>(own arrangement)</i> .
	13:00	Spare time for completion of any remaining theory or certification.
	16:00	Depart by speedboat to Besut Jetty <i>(own arrangement)</i> .
	17:00	Arrive at Besut Jetty.

• Disclaimer: Timings and activities are subject to sea and weather conditions and may change without prior notice

**TRANSPORTATION**

# Sea Transfer Service by Speedboat

Trip	Rate (MYR) <small>Child 3-11 years old</small>	Unit / Duration	Remarks
Speedboat (Besut Jetty ⇌ Barat)	40 / 70 adult 35 / 60 child	1-way / 2-way 1-way / 2-way ~ 35 mins way	
Chartered Speedboat (Besut Jetty ⇌ Barat) <small>Surcharge applies for 5pm – 8pm boat transfers</small>	600	1-way 8am – 5pm	Max 12 pax
Speedboat (Barat ⇌ Redang Island)	180	1-way subject to weather	Min 8 pax
Chartered (Barat ⇌ Redang Island / Lang Tengah)	2,200	1-way	Max 12 pax

- Pre-booking is required at least 2 days in advance
- The Barat is not liable for speedboat cancellations due to weather
- Schedule for Peak Season: To Island — 9am–5pm (hourly) | From Island — 8am, 10am, 12pm & 4pm
- Schedule for Low Season: To Island — 9am–2pm (hourly) | From Island — 8am & 12pm

# Land Transfer Service by Van

Activity / Route	Rate (MYR) <small>Child 3-11 years old</small>	Unit	Remarks
Kota Bharu Airport / Town ⇌ Besut Jetty (Shared van)	40 / 70 adult 35 / 60 child	1-way / 2-way 1-way / 2-way	Min 2 pax
Kota Bharu Airport / Town ⇌ Besut Jetty (Single pax)	80 / 140	1-way / 2-way	Single pax
Kota Bharu Airport / Town ⇌ Besut Jetty (Chartered van service)	220 / 440	1-way / 2-way	Max 7 pax / van
Kuala Terengganu Airport / Town → Besut Jetty	320	1-way	Max 7 pax
Besut Jetty → Kuala Terengganu Airport / Town	370	1-way	/ van
Kuala Terengganu Airport / Town ⇌ Besut Jetty (Chartered van service)	640	2-way	

- Minimum 2 pax required; pre-booking is required at least 2 days in advance
- Airport pickup: Peak Season — 7am–3:30pm | Low Season — 7am–12:30pm (shared van service)
- Besut Jetty to Kota Bharu Airport: Peak Season — 9am, 1pm & 5pm | Low Season — 9am & 1pm
- For booking, please email your booking number, full name, number of adults/children (with ages), flight number, and arrival time at the airport.





Discover  
adventure,  
relaxation  
and nature all  
in one place.

ACTIVITIES

SNORKELING

DIVING

WATERSPORTS

FISHING

CHARTERED BOAT

RENTAL

OTHERS

PADI

“So much to explore —  
the island felt different every day.”





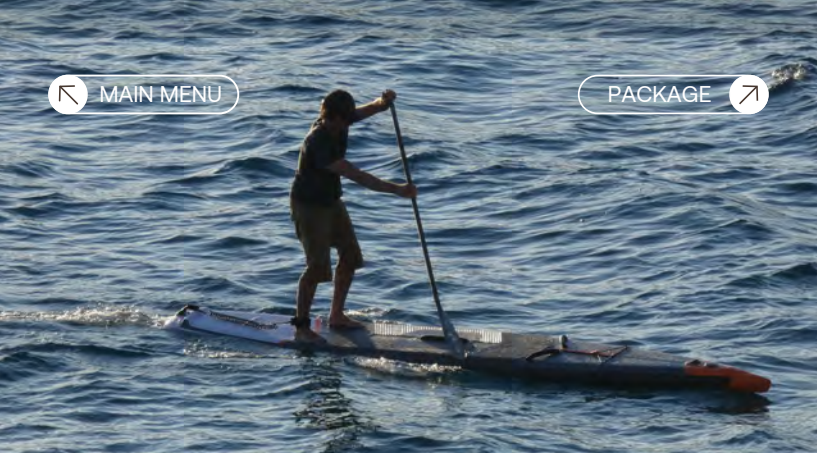
## ACTIVITIES

# Snorkeling and Hiking Trips

	Adult/ Child (MYR) <small>Child 3-11 years old</small>	Duration	Remarks
Trip A - Shark Point, Teluk KK, Turtle Point, Turtle Beach	60 / 50	~3 hrs	-
Trip B - Rawa Island, Tokong Burung, Serenggeh	80 / 70	~3 hrs	-
Trip C - D'Lagoon, Air Raja, Romantic Beach	80 / 70	~3 hrs	Min 6 pax
Trip D - Redang & Lang Tengah	180 / 160	~3 hrs	Min 8 pax
Hiking - Teluk Dalam Bay	60 / 50	~3 hrs	Min 4 pax
Hiking - Windmill (incl. water taxi)	80 / 70	~3 hrs	Min 4 pax

- Please book your activities at least 1 day in advance at the Recreational Counter or the Resort Front Office
- Rates exclude government taxes and the Marine Park Conservation Fee imposed by Malaysian authorities
- Snorkeling Trip C & D are not available for pre-booking. Please walk in to the Snorkeling Center for enquiries
- Disclaimer: The Barat is not responsible or liable for any injury or loss arising from accidents during the activities



**ACTIVITIES**

# Water Sports and Equipment Rental

Equipment / Rental	Rate (MYR)	Duration
Kayak (1-seater)	20 / 30 / 60	1 hr / 3 hr / 1 day
Kayak (2-seater)	30 / 40 / 60	1 hr / 3 hr / 1 day
Transparent Kayak (2-seater)	50 / 100 / 180	1 hr / 3 hr / 1 day
Stand-up Paddle Board (SUB)	30 / 40 / 80	1 hr / 3 hr / 1 day
Life Jacket	10	Per day
Snorkeling Set (mask + snorkel)	10	Per day

- Please book your activities at least 1 day in advance at the Recreational Counter or the Resort Front Office
- Disclaimer: The Barat is not responsible or liable for any injury or loss arising from accidents during the activities





## ACTIVITIES

# Fishing Trip

Duration	Rate (MYR)	Unit	Remarks
3 Hours	800	Per boat	Max 6 pax
6 Hours	1,600	Per boat	Max 6 pax

- Please book your activities at least 1 day in advance at the Recreational Counter or the Resort Front Office.
- Rates exclude government taxes and the Marine Park Conservation Fee imposed by Malaysian authorities.
- Disclaimer: The Barat is not responsible or liable for any injury or loss arising from accidents during the activities.

## Chartered Boat Services

Activity / Route	Rate (MYR)	Unit	Duration	Remarks
Sunset Tour – Romantic Beach	300	Per boat	-	Max 4 pax
Sunset Tour – Catamaran	120	Per pax	6.30pm-8pm	Min 4 pax
Round-Island Tour (Big & Small Island)	600	Per boat	-	Max 6 pax
Chartered Boat for Snorkeling Trip A or B	600	Per boat	~3 hrs	Max 8 pax
Chartered Boat for Snorkeling Trip A or B	900	Per boat	~3 hrs	Max 12 pax
Redang Island Day Trip	2,200	Per boat	~6 hrs	Max 12 pax

- Please book your activities at least 1 day in advance at the Recreational Counter or the Resort Front Office
- Rates exclude government taxes and the Marine Park Conservation Fee imposed by Malaysian authorities
- Disclaimer: The Barat is not responsible or liable for any injury or loss arising from accidents during the activities





## ACTIVITIES

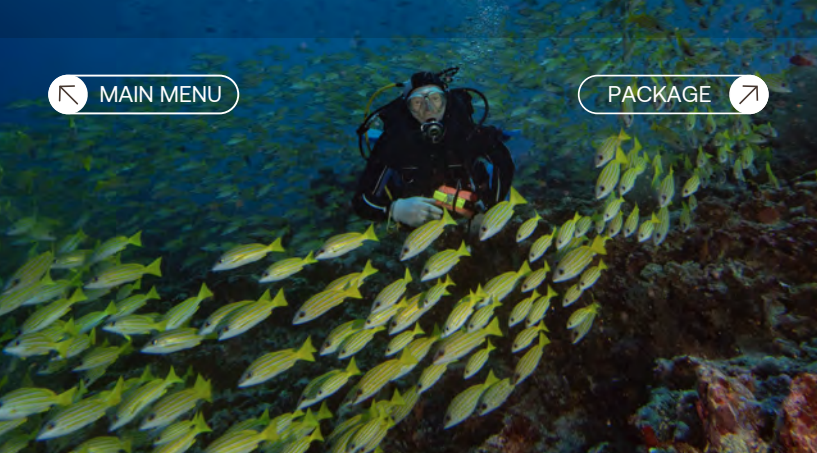
# Scuba Diving

## (with / without equipment)

Activity	Rate (MYR)	Unit / Remarks
1-2 Dives (certified divers only)	140	Per dive
3 Dives & Above (certified divers only)	120	Per dive
3 Dives Package at Redang Island	500	3 dives per pax / Min 4 pax
Sugar Wreck / Tokong Laut Surcharge	30	Per dive / pax
Night Dive Surcharge	50	Per dive / pax
Enriched Air Nitrox Surcharge	30	Per dive
Refresher Dive (certified divers only)	200	Per dive
Discovery Scuba Diving (non-certified, incl. equipment)	250	1 dive / pax
Discovery Scuba Diving ×2 (non-certified, incl. equipment)	450	2 dives / pax
Bubblemaker Dive (below 10 years old, incl. equipment)	220	Per dive

- Proof of diving certification is required for certified dives. The resort reserves the right to reject participants without valid certification
- Please book your activities at least 1 day in advance at the Recreational Counter or the Resort Front Office
- Rates exclude government taxes and the Marine Park Conservation Fee imposed by Malaysian authorities
- Disclaimer: The Barat is not responsible or liable for any injury or loss arising from accidents during the activities





## ACTIVITIES

# Scuba Diving Courses

Activity	Rate (MYR)	Unit / Remarks
PADI Open Water Course	1,450	Per pax
PADI Advanced Open Water	1,450	Per pax
PADI Enriched Air Nitrox Specialty (with 2 Dives)	750	Per pax
Emergency First Response (EFR)	600	Per pax
Rescue Diver Course	1,450	Per pax
Divemaster Course	P.O.A	Per course

- Please book your activities at least 1 day in advance at the Recreational Counter or the Resort Front Office
- Rates exclude government taxes and the Marine Park Conservation Fee imposed by Malaysian authorities
- Disclaimer: The Barat is not responsible or liable for any injury or loss arising from accidents during the activities



**RENTAL**

# Scuba Diving Equipment Rental

Activity	Rate (MYR)	Unit / Remarks
Full Set (BCD, Reg, Mask, Fin, Wetsuit)	60	Per day
Full Set (BCD, Reg, Mask, Fin, Wetsuit)	30	Per dive
Regulator (1st & 2nd Stage only)	30	Per day
BCD only	30	Per day
Wet Suit only	20	Per day
Mask + Snorkel	10	Per day
Fin (for scuba dive only)	10	Per day
Weight & Weight Belt	F.O.C	Per day
Underwater Torch Light	25	Per day
Dive Computer	30	Per day
Underwater Camera – Full Day	70	Per day
Underwater Camera – Half Day	50	Half day



## OTHERS

# Other Activities and Room Decoration

Activity / Route	Rate (MYR)	Unit	Remarks
Birthday / Anniversary / Honeymoon Decoration by Room	100	-	Setting only
Candlelight Dinner Setting	200	2 pax	Setting only
Candlelight Dinner Setting	350	3-6 pax	Setting only
Candlelight Dinner Setting	500	7-10 pax	Setting only
Candlelight Dinner Setting at Romantic Beach	600	per boat max 4 pax	Boat transfer & Setting only
Birthday Cake	100	0.5kg	Pre-book required
Birthday Cake	130	1kg	Pre-book required
Proposal Decoration by the Beach	350	-	Setting only
Wedding / Reception / Dinner Decoration	Price Varies	-	Depends on setup size

[← MAIN MENU](#)

[PACKAGE ↗](#)



A welcoming  
island retreat  
where you relax,  
explore and enjoy  
every moment



[BOOK NOW](#)



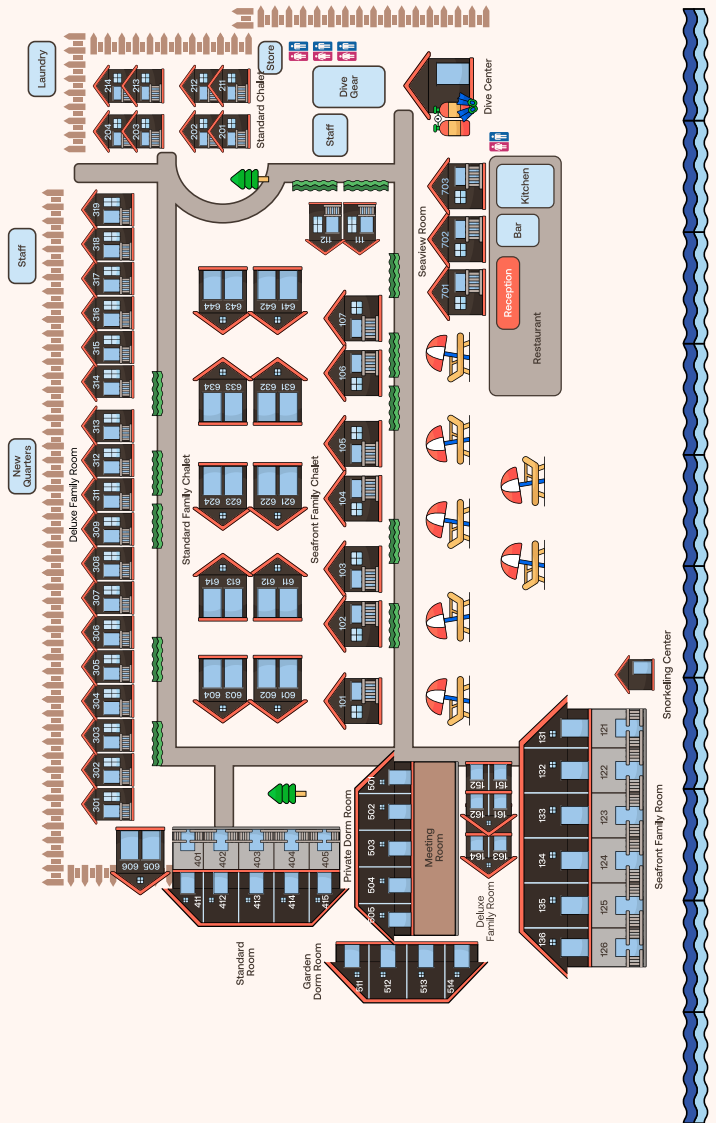
## 2026 SEASONAL CALENDAR

Month	Season	Surcharge Days
January	-	Closed
February	Low	14 <sup>th</sup> - 21 <sup>st</sup> February
March	Peak	7 <sup>th</sup> -8 <sup>th</sup> / 19 <sup>th</sup> -28 <sup>th</sup> March
April	Peak	-
May	Peak	1 <sup>st</sup> -3 <sup>rd</sup> / 23 <sup>rd</sup> -31 <sup>st</sup> May
June	Peak	1 <sup>st</sup> -6 <sup>th</sup> June
July	Super Peak	1 <sup>st</sup> -31 <sup>st</sup> July
August	Super Peak	1 <sup>st</sup> -31 <sup>st</sup> August
September	Peak	1 <sup>st</sup> -6 <sup>th</sup> September
October	Low	1 <sup>st</sup> -4 <sup>th</sup> October
November	-	Closed
December	-	Closed

*\* No Peak Surcharge for Retreat and Diving Packages*



MAP



## TERMS AND CONDITIONS

### • Special Requirements

We will do our best to accommodate any special needs or assistance you may require. If you have specific requests (e.g., disability support), please contact the resort as early as possible.

### • Check-In & Check-Out

Check-in is available after 2pm. Check-out by 11am.

Late check-out is subject to availability and a surcharge from RM100 / hour.

### • Children Policy

For snorkeling packages:

- 1 child below 6 years old stays free when sharing bed and meals with parents (one child per room).
- Children 6 years old and above are charged at the full rate.

### • Guarantee Policy

Full payment is required at the time of booking, via credit card or cash.

### • Cancellation Policy

- **More than 30 days before arrival:** 95% refund to the original payment method.
- **7 to 30 days before arrival:** 70% transferable credit voucher for a future stay within 1 year.
- **Less than 7 days before arrival:** Full deposit is forfeited. Credit vouchers may be issued at management's discretion based on the circumstances.

### • Rate Policy

All rates are subject to change. The Barat reserves the right to revise rates with or without prior notice.



# Get in touch with us

For Enquiry:

Email: [thebaratpp@gmail.com](mailto:thebaratpp@gmail.com)

WhatsApp: +6016 261 8888

Resort: +6019 391 8899

WeChat ID: Perhentian88

[www.baratperhentian.com](http://www.baratperhentian.com)

We look forward to welcoming  
you to The Barat Perhentian.

**Sales Office**

15B, Jalan SS21/56B, Uptown Damansara  
47400 Petaling Jaya, Selangor, Malaysia  
Tel: +603 7800 0168 · Fax: +603 7498 0608

**Resort Office**

Lot 136, GM 19, Kampung Seberang Genting  
Pulau Perhentian Besar, Terengganu, Malaysia  
Tel: +609 691 1288 · Fax: +609 691 1289



FOLLOW US: [barat perhentian resort](#)





**The Barat Perhentian**  
BEACH RESORT

